



TERMS OF USE

- Rental Hours: 8 a.m. to 10 p.m. Daily
- Facility Applications must be filled out for all facilities. Applications can be found on our website or in the Rush Park Office.
- Both INDOOR & OUTDOOR Facilities are smoke and alcohol free
- Restrooms are available
- Tables and chairs are available in designated quantities
- *Permittee(s)* are responsible for *ALL SETUP & ALL CLEANUP*
- The time period designated on the User Permit *includes* Setup and Take Down time.
- User Permit Balances must be paid in full *prior* to the pickup of key (if applicable).
- Payment by *cash* or *check* only. Checks must be submitted two weeks in advance of balance due date.
- Residents may apply to reserve Outdoor Picnic Areas
- *No-Cost Permits* are *required* for Outdoor Areas with Groups of (50) or more
- Youth Groups must be chaperoned in the ratio of (1) Adult per (10) Youths
- *Helium Balloons* are not permitted in the *Rush Park Auditorium*
- *Amplified Sound* or *DJs* are not permitted at *Montecito Center*.
- Tacks, nails, staples, tape, etc. are not permitted on walls, ceilings, or woodwork
- *Smokers* and *BBQs* are confined to *designated areas only* and are not permitted near structures, under eaves or awnings.
- User Groups must confine their use to the area(s) designated on the User Permit & conclude all activities by 10 p.m.
- All areas must be cleaned and returned to original condition *prior to* permittee(s) *leaving premises*

EVENT ATTENDANTS

- The role of the *Event Attendant* is to provide *guidance* and *access* to the rented facility. Attendants do not help with moving, setup or cleanup. These are solely the responsibilities of the permittee(s).
- ♦ **Attendants may be assigned for any and all events at the discretion of the District as deemed necessary to secure the safety and well being of the community in its entirety.**



ROSSMOOR COMMUNITY SERVICES DISTRICT
3001 BLUME DRIVE
ROSSMOOR, CA 90720



FEE SCHEDULE

HOURLY RATES

RUSH PARK	RES	NON RES
AUDITORIUM*	\$55	\$75
EAST ROOM	\$14	\$19
WEST ROOM	\$10.50	\$14.50
KITCHEN	\$41	\$56
ROSSMOOR PARK	RES	NON RES
COMMUNITY ROOM*	\$30	\$41
KITCHEN	\$16.50	\$24
MONTECITO CTR.	RES	NON RES
BOTH ROOMS*	\$26	\$35

MISCELLANEOUS FEES	FLAT RATE
User Permit Fee (Non-Refundable)	\$20.00
UP Change Fee (2nd)	\$20.00
Cleaning Deposit (Refundable)	\$175.00
Event Deposit (Refundable)	\$60.00
Key/Gate Deposit (Refundable)	\$25.00
False Alarm Fee (Sheriff's Rate)	\$74.00
Attendant Fee (Hourly: 4 Hr. Min.)	\$20.00
Check NSF	\$25.00
Not All Inclusive: See Complete Fee Schedule on our website	

Facility applications are available on our website under the Parks & Facilities link. Completed applications may be e-mailed, faxed or hand-delivered to our office between the hours of 9:00 a.m. and 4:30 p.m. Attendants may be assigned for any and all events at the discretion of the District as deemed necessary to secure the safety and well being of the community in its entirety.

ROSSMOOR



FACILITY RENTALS

COMMUNITY SERVICES DISTRICT

M-F



9-5

562.430.3707



WWW.ROSSMOOR-CSD.ORG

FAX: 562.431.3710

RUSH PARK



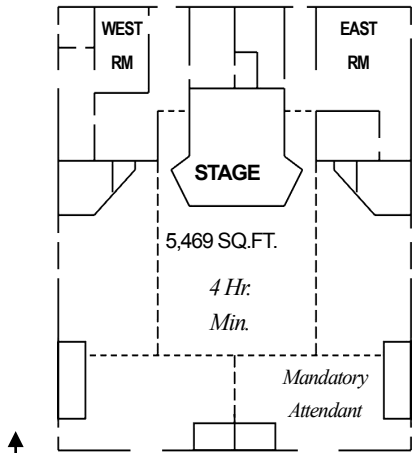
Rush Park Auditorium is the choice accommodation for large events, whether formal or casual. Our Auditorium's expansive design is perfect for all sorts of celebrations and is even equipped with a stage for entertainment and performance events. The more intimate East and West Rooms are best for smaller groups.

If you prefer celebrating outdoors, Rush Park has plenty of open grassy areas to play sports or enjoy a family picnic, a Tot Lot generously laden with playground equipment for the little ones, and Life Trail Fitness Stations throughout..



PER USE RENTALS	FEES
Podium	\$50.00
Risers	\$30.00
Portable Screen	\$15.00

8.2 ACRES



3021 Blume Drive

AMENITIES

AUDITORIUM

- ◆ MAX CAPACITY: 300-600
- ◆ 24 Tables: 6' L Rectangular
- ◆ 400 Chairs

EAST ROOM: 572 SQ. FT.

- ◆ MAX CAPACITY: 30
- ◆ 4 Tables
- ◆ 26 Chairs
- ◆ WEST ROOM: 238 SQ. FT.
- ◆ MAX CAPACITY: 15
- ◆ 2 Tables
- ◆ 12 Chairs

KITCHEN (Detached)

- ◆ Available for a separate fee

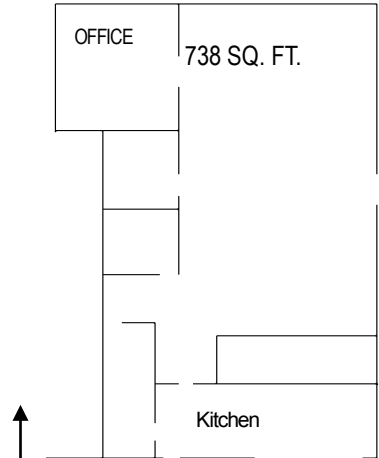
ROSSMOOR PARK



The Rossmoor Park Community Room and kitchen can be individually reserved for your private event. Outdoor recreational activities include tennis, baseball, softball, volleyball, and soccer. Colorful playground equipment is available for the youngsters to enjoy. BBQs, picnic tables and lots of shade make for the perfect outdoor experience.



Beneath the Rossmoor Park canopy is an attractive outdoor gathering space.



3232 Hedwig Road

AMENITIES

COMMUNITY ROOM

- ◆ MAX CAPACITY 40-50
- ◆ 6 Tables: 6' L Rectangular
- ◆ 45 Chairs

KITCHEN

- ◆ Snack Shack
- ◆ Outdoor Canopy

8.55 ACRES

MONTECITO CENTER



Beyond Montecito Center's inviting French doors are two indoor rooms with a kitchenette. Located in a residential setting, this very lovely facility is peaceful and secluded. DJs and amplified sound are not permitted. Remember all of our facilities are smoke-free.



Located on Montecito Road in Rossmoor, Montecito Center is great for all occasions. Eight tables and sixty five chairs ensure ample seating for your event.



Montecito Center's patio area contains plenty of comfortable outdoor seating and the lush green courtyard lends the perfect background to private meetings and gatherings of a moderate size. Guests may enjoy a separate parking lot as well.

For reservations call 562.430-3707

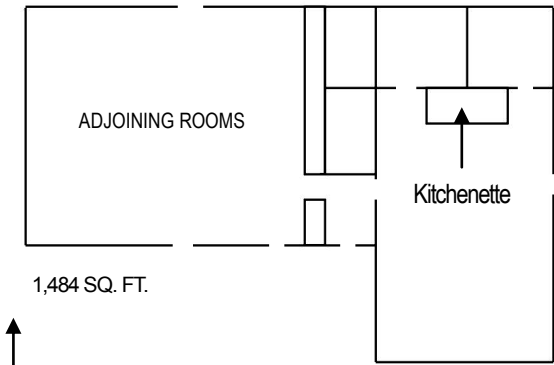
AMENITIES

INDOOR

- ◆ MAX CAP.: 70-75
- ◆ 2 Adjoining Rooms
- ◆ 8 Tables: 6' L Rectangular
- ◆ 65 Chairs
- ◆ Kitchenette

OUTDOOR

- ◆ Courtyard
- ◆ Patio
- ◆ Storage



12341 Montecito Road